

# Sell – GlaxoSmithKline (GSK)

February 19, 2013

Leveraged products involve a high level of risk and you can lose more than your original investment. They are not suitable for everyone so please ensure you understand the risks involved and if necessary please obtain investment advice from a financial adviser before investing. This report is not a personal recommendation and does not take into account your personal circumstances or appetite for risk.

**Trade parameters:**

Current Price	Stop Loss	Limit/Target	Reward vs. Risk	CFD Margin
1470p	20p away (1490p)	1415p	2.8x	5%

**Technical Observations - For**

- Shares slowed up at rising trendline of resistance
- RSI broken below trendline of support
- RSI turned back from oversold
- Momentum testing rising trendline of support
- Falling volumes as momentum slowed

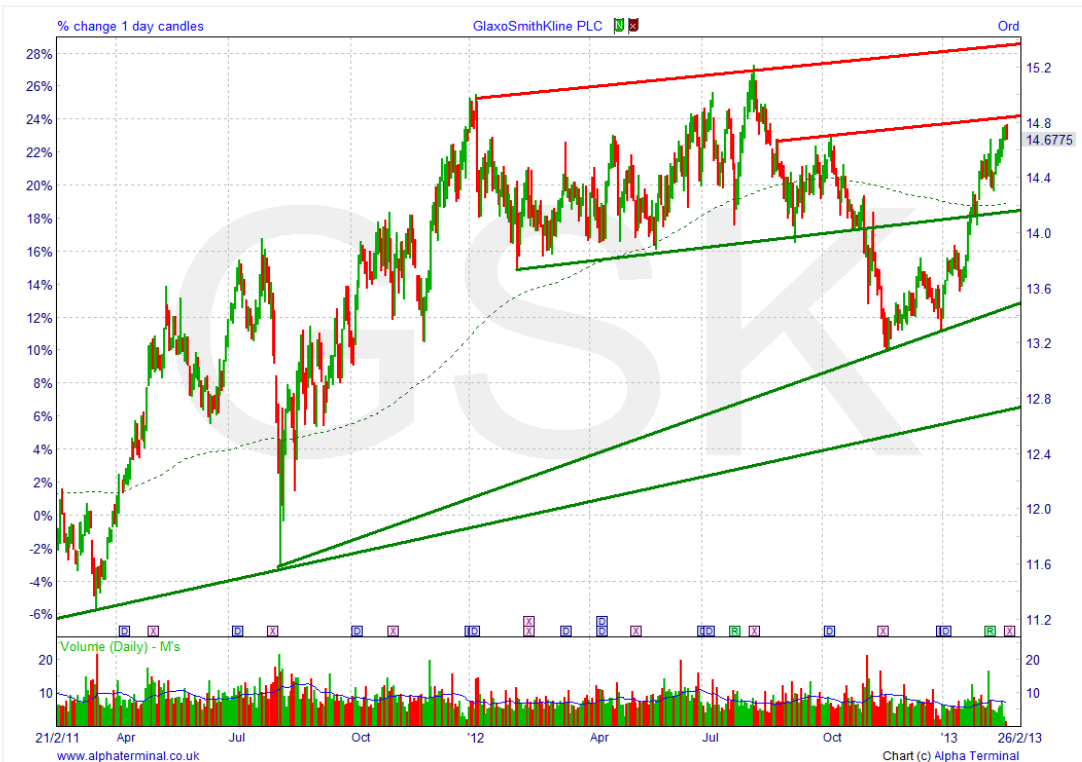
**Technical Observations - Against**

- MACD not yet turned down below signal
- ADX (trend strength) still very strong
- Momentum not yet gone negative
- Performance vs. FTSE100 been improving
- Support from 200-day moving average (1415p) before target

**News / Broker Comments / Important Dates / Observations \*\***

JV ViiV Healthcare says *Dolutegravir* for HIV, in combination with antivirals, granted FDA priority review (15 Feb). Fitch says does not expect large acquisitions by GSK, more likely AZN (14 Feb). Reuters says GSK amongst few considering 3-4bn deal for Brazilian drug-maker (13 Feb). Company's asks for accelerated authorization of *Trametinib* (7 Feb). Shares rose strongly after recent results (6 Feb), but momentum fallen since. **Next Event: Ex-div, 20 Feb\***; Q1 results, 24 Apr *\*Trade parameters may need revising from tomorrow*

**Latest Broker 12m Consensus: 11 x Buy, 17 x Hold, 4 x Sell** (Source: Digital Look & AlphaTerminal) (U = Upgrade / D = Downgrade) **19-Feb**, JPMorgan, Underweight, TP 1460p; **12-Feb**, BoA-ML, Buy, TP 1575p; **7-Feb**, ExaneBNP, Underperform, TP 1400p; **7-Feb**, Barclays, Overweight, TP 1510p; **7-Feb**, UBS, Neutral, 1450p; **7-Feb**, Jefferies, Hold, TP 1500p; **5-Feb**, Nomura, TP1340p



**Stock description**

**GlaxoSmithKline PLC** is a research-based pharmaceutical company. The Company develops, manufactures, and markets vaccines, prescription, and over-the-counter medicines, as well as health-related consumer products. GlaxoSmithKline provides products for infections, depression, skin conditions, asthma, heart & circulatory disease, and cancer. (FTSE100)

**Graph: 2-year (daily)**

**Stock last used as Trade Idea;**  
24-Oct-2012

**\*\*Source:** DowJones Newswires, Reuters News or Company Press releases, Bloomberg.com

Need help understanding this page? [Click](#)

Need help with Technical Analysis? [Click](#)

Our research is produced by Accendo Markets Limited. Research produced and disseminated by Accendo Markets is classified as non-independent research, and is therefore a marketing communication. Accendo Markets research has not been prepared in accordance with legal requirements designed to promote its independence and may not comply with FSA guidelines to prevent conflicts of interest and is not subject to any prohibition on dealing ahead of the dissemination of research. As such, this research does not constitute a personal recommendation or offer to enter into a transaction or an investment, and is produced and distributed for information purposes only. Accendo Markets considers information contained within the research to be valid when published, and gives no warranty as to the investments referred to in this material. The income from the investments referred to may go down as well as up, and investors may realise losses on investments. The past performance of a particular investment is not necessarily a guide to its future performance. Prepared by Michael van Dulken, Analyst

# Sell – GlaxoSmithKline (GSK)

February 19, 2013

Leveraged products involve a high level of risk and you can lose more than your original investment. They are not suitable for everyone so please ensure you understand the risks involved and if necessary please obtain investment advice from a financial adviser before investing. This report is not a personal recommendation and does not take into account your personal circumstances or appetite for risk.

**Graph: 2-year (daily) - ADX and Directional Indicators, MACD & Volume**



**Moving averages on price:**  
**Green: 200-period, Black: 100-period, Red: 50-period, Red: 20-period**

Need help understanding this page? [Click](#)

Need help with Technical Analysis? [Click](#)

# Sell – GlaxoSmithKline (GSK)

February 19, 2013

Leveraged products involve a high level of risk and you can lose more than your original investment. They are not suitable for everyone so please ensure you understand the risks involved and if necessary please obtain investment advice from a financial adviser before investing. This report is not a personal recommendation and does not take into account your personal circumstances or appetite for risk.

**Graph: 2-year (daily) - RSI, Momentum and Performance relative to FTSE 100**



Share	1wk	1m	3m	1yr	2yr	3yr	4yr	5yr
Perf %	1.05	4.5	10.02	4.35	22.81	21.49	34.21	30.16

Need help understanding this page? [Click](#)

Need help with Technical Analysis? [Click](#)